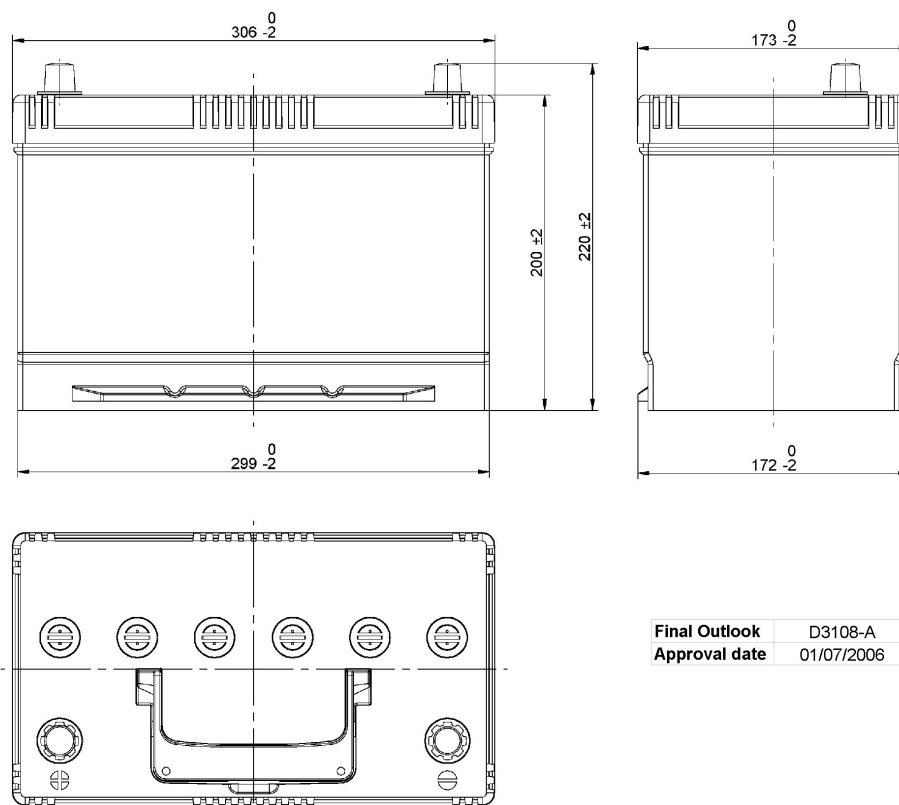


Central Article Code: D31069C08-A

Created: 21/11/2013

Local Code: EC905

Modified: 31/07/2020



Final Outlook	D3108-A
Approval date	01/07/2006

PERFORMANCES

Voltage (V):	12 V
C20 (Ah):	90.0 20 h
Cranking (A):	680 EN
Charge:	WET
Technology:	Vented/Flooded
Grid:	Ca/Ca
Vibration:	V1 (30Hz+/-2Hz/3g/2h)
Endurance:	E1 (180 cycles@25%)

STD. DIMENSIONS

Length (mm ± 2):	306
Width (mm ± 2):	173
Height (mm ± 2):	222
Total Weight (kg ± 5%):	19.90

All figures show nominal values. Tolerances are according to EN50342 and applicable European Regulations.

CONTAINER

Type:	D31 BLACK
Hold Down:	Korean B1
H.D. Adapter:	No

COVER

Type:	Flat/Screw Integrate BLACK
Polarity:	ETN 1
Terminals:	EN taper post
Terminal Adapter:	No
SOCI:	No
Ventilation:	Independent
Filter:	No
Lateral Plug:	No

PLUGS

Type:	6 x M18 BLACK
-------	--------------------

HANDLES

Type:	1 x Integrated BLACK
-------	---------------------------

OTHERS

Degassing Tube:	No
-----------------	----