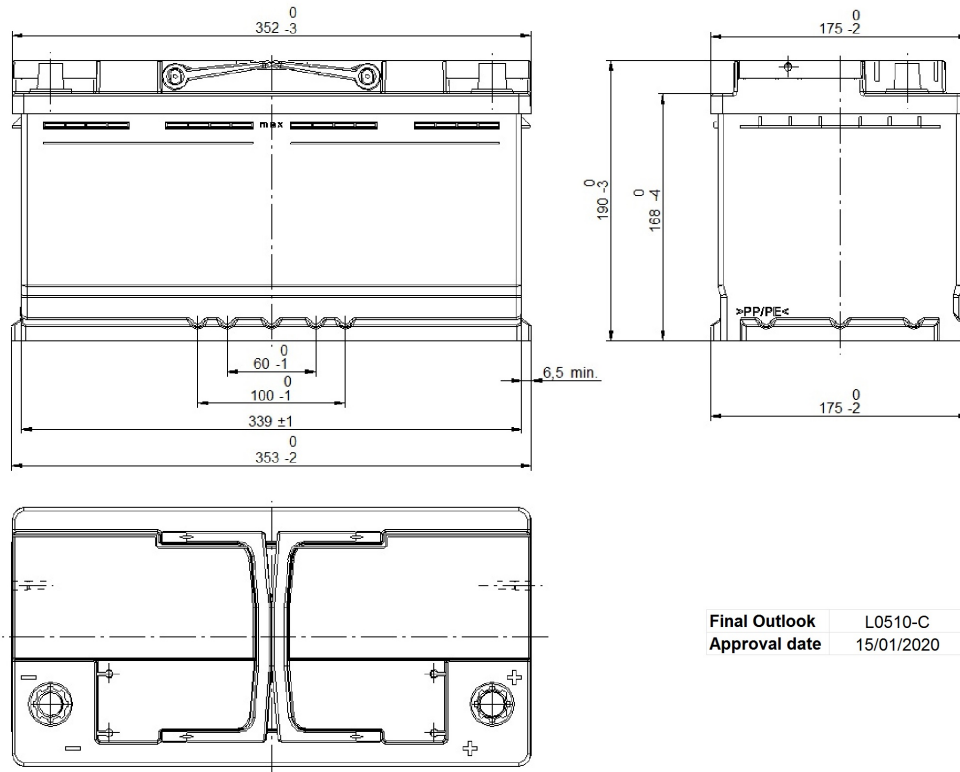


Central Article Code: L05097C10-C
 Local Code: EL1000

Created: 25/07/2019
 Modified: 10/02/2023



Final Outlook L0510-C
 Approval date 15/01/2020

PERFORMANCES

Voltage (V):	12 V
C20 (Ah):	100.0 20 h
Cranking (A):	900 EN
Charge:	WET
Technology:	Vented/Flooded
Grid:	Ca/Ca
Vibration:	V1 (30Hz+/-2Hz/3g/2h)
Endurance:	EN-EFB Requirement

STD. DIMENSIONS

Length (mm ± 2):	353
Width (mm ± 2):	175
Height (mm ± 2):	190
Total Weight (kg ± 5%):	25.50

All figures show nominal values. Tolerances are according to EN50342 and applicable European Regulations.

CONTAINER

Type:	L05 BLACK
Hold Down:	B13
H.D. Adapter:	No

COVER

Type:	Double with Integrat BLACK
Polarity:	ETN 0
Terminals:	EN taper post
Terminal Adapter:	No
SOCI:	No
Ventilation:	Central
Filter:	2 Filters
Lateral Plug:	Standard Right side BLACK shape

PLUGS

Type:	1 x Vent Sealed PSL-OE ha BLACK
-------	--------------------------------------

HANDLES

Type:	2 x PSL OE Integrated BLACK
-------	----------------------------------

OTHERS

Degassing Tube:	No
-----------------	----

Used for BOSCH