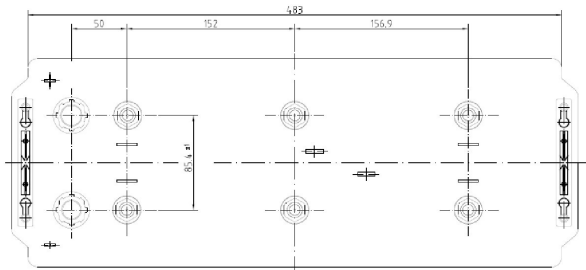
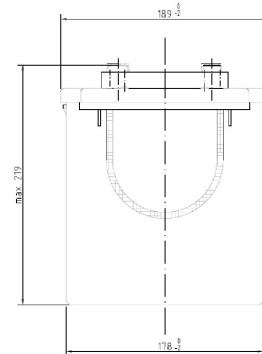
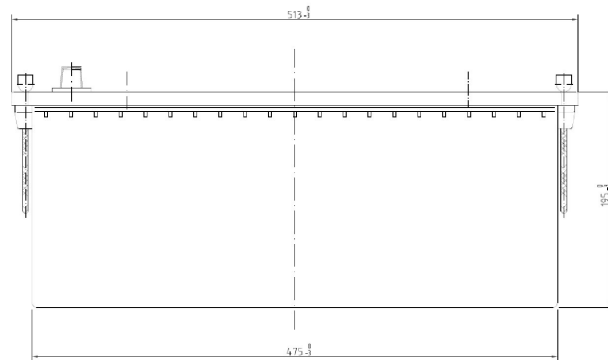


Central Article Code: D04076G09-A
 Local Code: ES1350

Created: 05/09/2005
 Modified: 20/07/2023



Final Outlook	D0409-A
Approval date	01/11/2010

PERFORMANCES

Voltage (V):	12 V
C20 (Ah):	120.0 20 h
Cranking (A):	0 EN
Charge:	CHARGED
Technology:	GEL
Grid:	Ca/Ca
Vibration:	V3 (30Hz+/-2Hz/6g/20h)
Endurance:	200 cycles@100%

STD. DIMENSIONS

Length (mm ± 2):	513
Width (mm ± 2):	189
Height (mm ± 2):	223
Total Weight (kg ± 5%):	40.00

CONTAINER

Type:	D04	BLACK
Hold Down:	B0	
H.D. Adapter:	No	

COVER

Type:	Flat/Screw	BLACK
Polarity:	ETN 3	
Terminals:	EN taper post	
Terminal Adapter:	No	
SOCI:	No	
Ventilation:	Independent	
Filter:	No	
Lateral Plug:	No	

PLUGS

Type:	6 x M18 Valve	GREY MEDIUM
-------	---------------	-------------

HANDLES

Type:	2 x Rope (Rigid holder)	BLACK
-------	-------------------------	-------

OTHERS

Degassing Tube:	No
Gel	

DNV-GL type approved 2015/Used for Bosch

All figures show nominal values. Tolerances are according to EN50342 and applicable European Regulations.